

METAL REDUCERS

BRASS

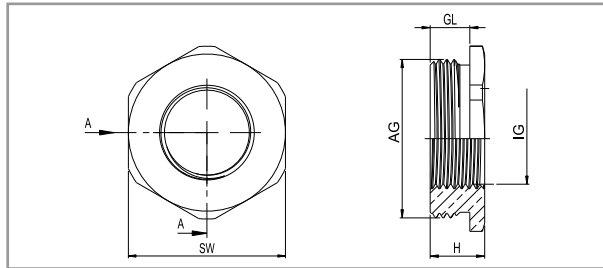
TECHNICAL DETAILS

Material


| | |
|-------------------|-------------------------------------|
| Reducer | : Brass with nickel plated |
| O-ring | : NBR |
| Connection thread | : Metric (EN60423) / PG (DIN 40430) |
| Certificates | : ROHS, CE |
| Protection class | : IP68 |

Properties

Enable the use with smaller connection threaded cable glands than existing threaded holes



METRIC/PG THREAD REDUCER

| AG Thread | Code | IG mm | H mm | GL mm |  mm |
|------------|-----------|------------|------|-------|--|
| M 16 x 1,5 | M16RM12 | M 12 x 1,5 | 9 | 6 | 18 |
| M 20 x 1,5 | M20RM12 | M 12 x 1,5 | 9 | 6 | 22 |
| M 20 x 1,5 | M20RM16 | M 16 x 1,5 | 9 | 6 | 22 |
| M 25 x 1,5 | M25RM16 | M 16 x 1,5 | 10 | 7 | 27 |
| M 25 x 1,5 | M25RM20 | M 20 x 1,5 | 10 | 7 | 27 |
| M 32 x 1,5 | M32RM16 | M 16 x 1,5 | 11 | 8 | 34 |
| M 32 x 1,5 | M32RM20 | M 20 x 1,5 | 11 | 8 | 34 |
| M 32 x 1,5 | M32RM25 | M 25 x 1,5 | 11 | 8 | 34 |
| M 40 x 1,5 | M40RM20 | M 20 x 1,5 | 12 | 8 | 45 |
| M 40 x 1,5 | M40RM25 | M 25 x 1,5 | 12 | 8 | 45 |
| M 40 x 1,5 | M40RM32 | M 32 x 1,5 | 12 | 8 | 45 |
| M 50 x 1,5 | M50RM25 | M 25 x 1,5 | 14 | 10 | 55 |
| M 50 x 1,5 | M50RM32 | M 32 x 1,5 | 14 | 10 | 55 |
| M 50 x 1,5 | M50RM40 | M 40 x 1,5 | 14 | 10 | 55 |
| M 63 x 1,5 | M63RM32 | M 32 x 1,5 | 14 | 10 | 65 |
| M 63 x 1,5 | M63RM40 | M 40 x 1,5 | 14 | 10 | 65 |
| M 63 x 1,5 | M63RM50 | M 50 x 1,5 | 14 | 10 | 65 |
| M 80 x 2 | M80RM75 | M 75 x 1,5 | 34 | 15 | 85 |
| PG 9 | P9RP7 | PG 7 | 9 | 6 | 17 |
| PG 11 | P11RP7 | PG 7 | 9 | 6 | 20 |
| PG 11 | P11RP9 | PG 9 | 9 | 6 | 20 |
| PG 13,5 | P13,5RP9 | PG 9 | 9,5 | 6,5 | 22 |
| PG 13,5 | P13,5RP11 | PG 11 | 18,5 | 6,5 | 22 |
| PG 16 | P16RP9 | PG 9 | 9,5 | 6,5 | 24 |
| PG 16 | P16RP11 | PG 11 | 9,5 | 6,5 | 24 |
| PG 16 | P16RP13,5 | PG 13,5 | 19 | 6,5 | 24 |
| PG 21 | P21RP11 | PG 11 | 11 | 7 | 30 |
| PG 21 | P21RP13,5 | PG 13,5 | 11 | 7 | 30 |
| PG 21 | P21RP16 | PG 16 | 11 | 7 | 30 |
| PG 29 | P29RP16 | PG 16 | 12 | 8 | 40 |
| PG 29 | P29RP21 | PG 21 | 12 | 8 | 40 |
| PG 36 | P36RP21 | PG 21 | 13 | 9 | 50 |
| PG 36 | P36RP29 | PG 29 | 13 | 9 | 50 |
| PG 42 | P42RP29 | PG 29 | 14 | 10 | 60 |
| PG 42 | P42RP36 | PG 36 | 14 | 10 | 60 |
| PG 48 | P48RP36 | PG 36 | 14 | 10 | 65 |
| PG 48 | P48RP42 | PG 42 | 14 | 10 | 65 |